

CottonCap[®]

Suppressing silverleaf whiteflies with parasitic wasps



Crop: Cotton

Target pest: Silverleaf whitefly (SLW) (*Bemisia tabaci*)

Capsule contents: 500 beneficial parasitoids (*Eretmocerus hayati*)

Mode of action: Parasitic wasps targeting SLW. Parasitism of SLW by *E.hayati* is a multi-step process that ultimately results in the death of the host insect, and the emergence of subsequent generations of parasitoids to provide ongoing suppression of pest populations.

Application method: Aerial (Light Aircraft)

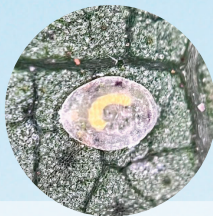
Application rate: 1-2 capsules per ha. In some cases, multiple releases may be required to provide adequate suppression, particularly if reinfestations from outside sources occur.

Withholding period: Nil



Left: Adult *E.hayati* wasp
Source: Bugs for Bugs

Right: SLW nymph parasitised by *E.hayati*
Source: Crop Capsules



An industry-developed decision support tool (DST) is available at www.cottoninfo.com.au

For more information contact:

adam@croppcapsules.com.au +61 0404 875 276

olivia@croppcapsules.com.au +61 0488 766 386

sophie@croppcapsules.com.au +61 0409 001 142

This technical summary is intended as general advice. The information submitted is based on current Crop Capsules knowledge and experience. It is the responsibility of the user to ensure that any proprietary rights and existing laws and legislation are observed. © Crop Capsules 2024



croppcapsules.com.au

Application Timing

- ✓ A preemptive inoculative release coinciding with the first and second generation of SLW is the most effective way to prevent SLW outbreaks in your crop.
- ✓ Start monitoring the crop for signs of SLW activity at pre- or early flowering (around 1000DD).
- ✓ First signs of nymph or adult SLW can be detected by closely inspecting the undersides of cotton leaves.
- ✓ SLW population densities can increase rapidly in hot, dry conditions.

Application Method

- ✓ Crop Capsules are released across fields using a light aircraft equipped with a purpose-built hopper, ensuring quick and even distribution through precision placement technology.
- ✓ We have a network of approved aerial operators and light aircraft fitted with capsule-spreading technology.
- ✓ Contact Crop Capsules to arrange aerial application.

Why choose to mass-release *E.hayati*?

1. Reduce SLW populations early in the crop cycle
2. Reduce, delay or eliminate the need for chemical insecticides
3. Prevent SLW resistance to chemical insecticides
4. Nil impact on non-target species and other beneficial insects due to specificity of *E.hayati* to SLW
5. Cost-effective management of SLW
6. Promotes eco-friendly cotton farming by protecting soil health and water quality