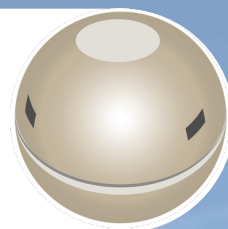


CanolaCAP®

LIMITED SUPPLY – Register your interest

THE CROP CAPSULES COMPANY



What is CanolaCAP®?

CanolaCAP® is a biological control option for suppressing aphids in canola, delivered through an aerially applied capsule system that releases the parasitoid *Diaeretiella rapae* directly into the crop. Each capsule contains > 700 parasitoids (in aphid mummies) which emerge and actively search for aphids such as **cabbage, green peach, and turnip aphid**.



Female parasitoids lay eggs inside aphids, causing the host to swell, harden, and form a characteristic 'mummy'. The developing wasp kills the aphid and later emerges as an adult. These subsequent generations provide ongoing in-field suppression, with the first mummies typically visible 2–3 weeks after release.

Why Consider CanolaCAP®?

- Access an innovative biological aphid suppression option
- No withholding period
- Ideal for growers aiming to reduce reliance on broad-spectrum insecticides and conserve existing chemistry through resistance mitigation
- Aphids do not develop resistance to parasitoids
- Supports IPM-aligned pest management
- Opportunity to influence and benefit from the refinement of an emerging biocontrol technology

Limited Supply – Register Your Interest

Although CanolaCAP® remains in its trial development phase, early-stage commercial releases are available in limited volumes for 2026.

Your early adoption helps accelerate the development of a robust biological aphid suppression tool for the canola industry.

Agronomists and growers are encouraged to place an Expression of Interest asap to secure availability.

EOI deadline: April 30th, 2026

What we've seen so far (Trial Results)

CanolaCAP® has been trialled over the past 3 years and results to date are highly encouraging:

- **Small-scale field trials** (Fig. 1): 30-50% fewer aphids in augmented plots compared to plots relying on natural parasitoids alone.
- **Large-scale field trials** (Fig. 2): Models based on field data show a reduction of aphids of up to 75% in augmented plots compared to natural plots.

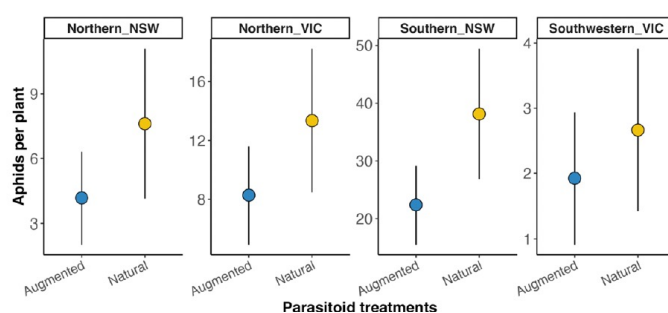


Figure 1. Average (± Confidence Intervals) number of aphids per canola plant at the augmented and natural (non-augmented) plots for each region in spring field surveys. Source: Cesar Australia

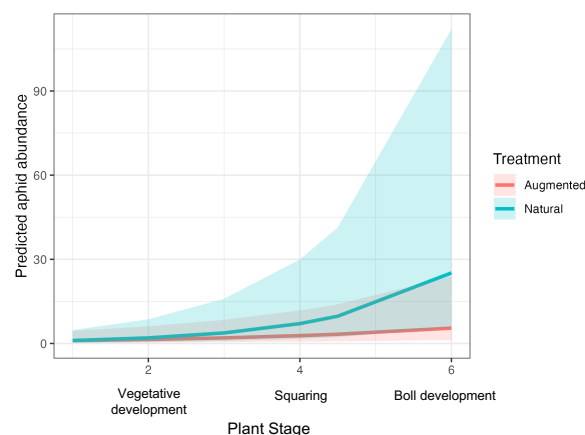
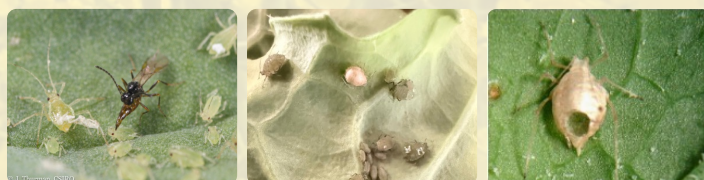


Figure 2. Predicted aphid abundance in augmented (CanolaCAP®) and natural (non-augmented) plots. Source: Floris Van Ogtrop, University of Sydney.



See our CanolaCAP® Fact Sheet for application timing, rates and monitoring recommendations.

For more information contact:

OLIVIA BANGE
ANNA MADDEN

+61 0488 766 386
+61 0427 293 557

REGISTER YOUR INTEREST HERE

info@cropcapsules.com.au
cropcapsules.com.au

